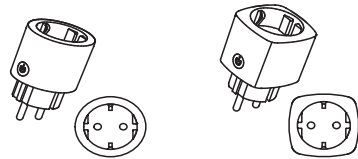


Wi-Fi Smart Socket User Manual

PRODUCT OVERVIEW

Wi-Fi smart socket is a through Wi-Fi Connection to the internet, by Mobile phones Can remote control home appliances.Regular support tasks,the countdown,real-time two-way feedback,etc.If you want to use voice control,you can connect to the Amazon Echo smart box,and when the configuration is successful,you can use the voice control devices.



THE PREPARATORY WORK

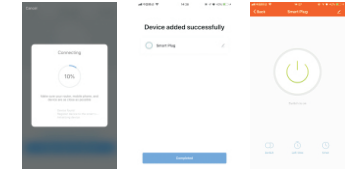
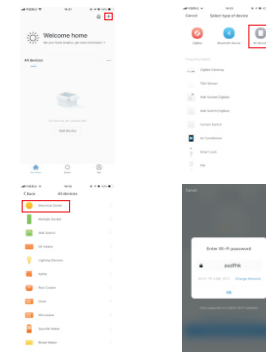
- 1 Scan the QR code,down load and install 'Smart Life' in your phone,you can also Down load 'Smart Life' App from App Store or Google Play and install in your phone
- 2 Make sure your phone is connected to your home Wi-Fi network(2.4Ghz).
- 3 Plug the Wi-Fi smart outlets into power socket,You can see the blue LED in a flash state,if there is not flash or reconfigure,please long press button about 5 seconds to restore the factory Settings.



iOS/android

ADD DEVICETS TO SMART LIFF APP

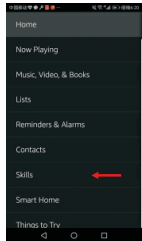
- 1 Open the 'Smart Life' App,click '+', then click the 'All devices',select 'Electrical outlet' then enter the mobile phone is connected Wi-Fi password configured,see the PIC 1,2,3,4,5,6,7



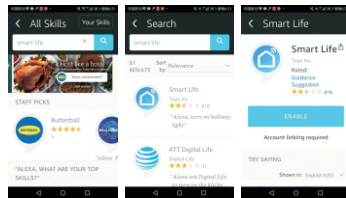
- 2 After the success of the device configuration,jump to device control interface,click '...', Can manage the device ,such as :modify the name. Check the firmware the update and restore factory Settings,and so on
- 3 Into the 'Scenes' page,click on the top right corner '+' can add scene.Enter the scene name ,and then add needs to perform a single or multiple tasks,can be a key management device after save

How to use Amazon Echo to control your Smart devices?

Step 1:open the "Amazon Alexa"App,then find the "Skill" button on the menu,press it.

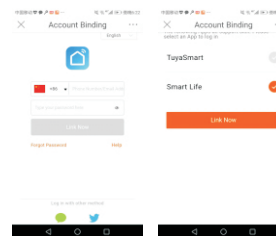


Step 2: Search the "Smart life"and choose the first one ,then Enable it.

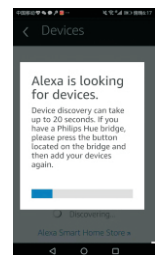
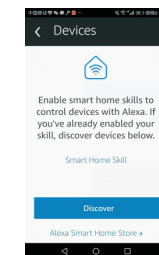
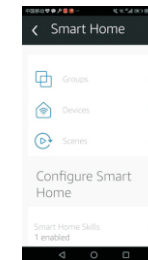
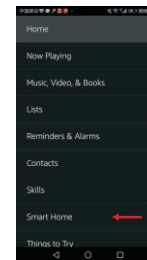


Step 3:Select your country code and Enter your "Smart Life" App

Account and Password,then press the "Link now" button when the Account success to login press the "Done" button



Step 4:Back to the menu,and press the "Smart home"button ,then choose the "Devices",then press the "Discover"button.



Step 5: Now u can use your Alexa to control your Smart devices,enjoy yourself.